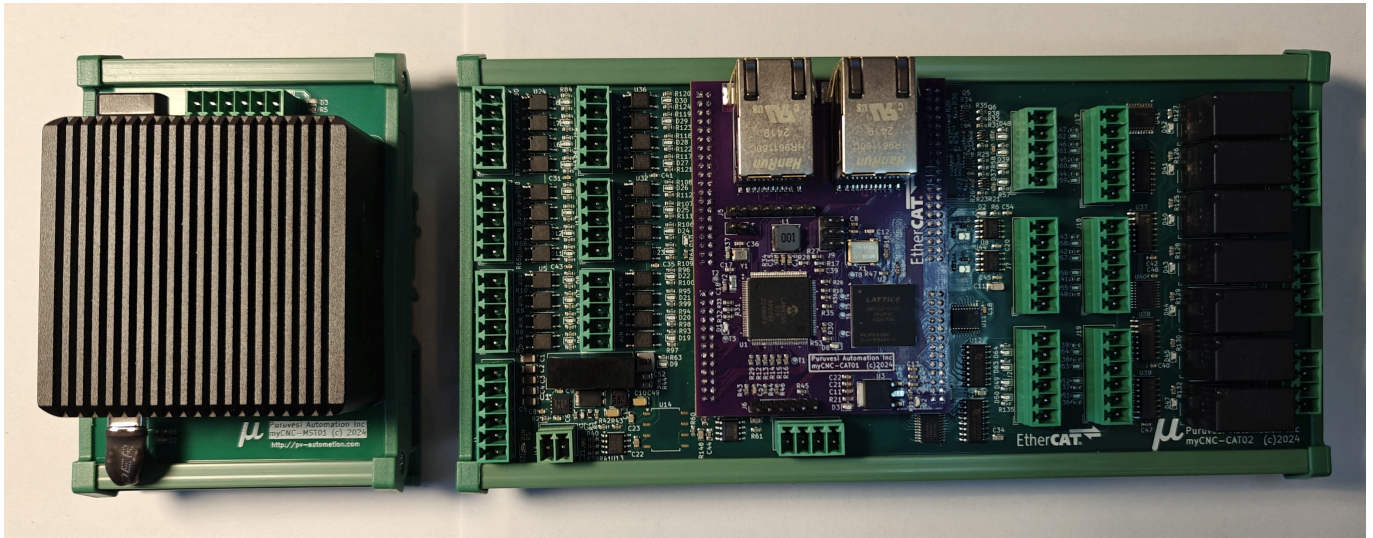


# EtherCAT



**Fix Me!** *ARTICLE UNDER CONSTRUCTION. The EtherCAT boards are currently under development and are being tested (as of July 01, 2025).*

The latest myCNC controller features EtherCAT technology:



Two Master Controller options are currently offered:

- Industrial PC-based Master
- myCNC-MST01 (pictured on the left in the photo above)

Connectivity:

- Digital I/O: 24 Digital Inputs / 24 Digital Outputs.
- DAC: 2 Channels
- ADC: 3 Channels
- Modbus for Custom Projects
- PWM Outputs: 3 Channels
- 8+2 Axes: Control up to 8 primary motion axes, plus 2 independent auxiliary axes dedicated to focus and height control.

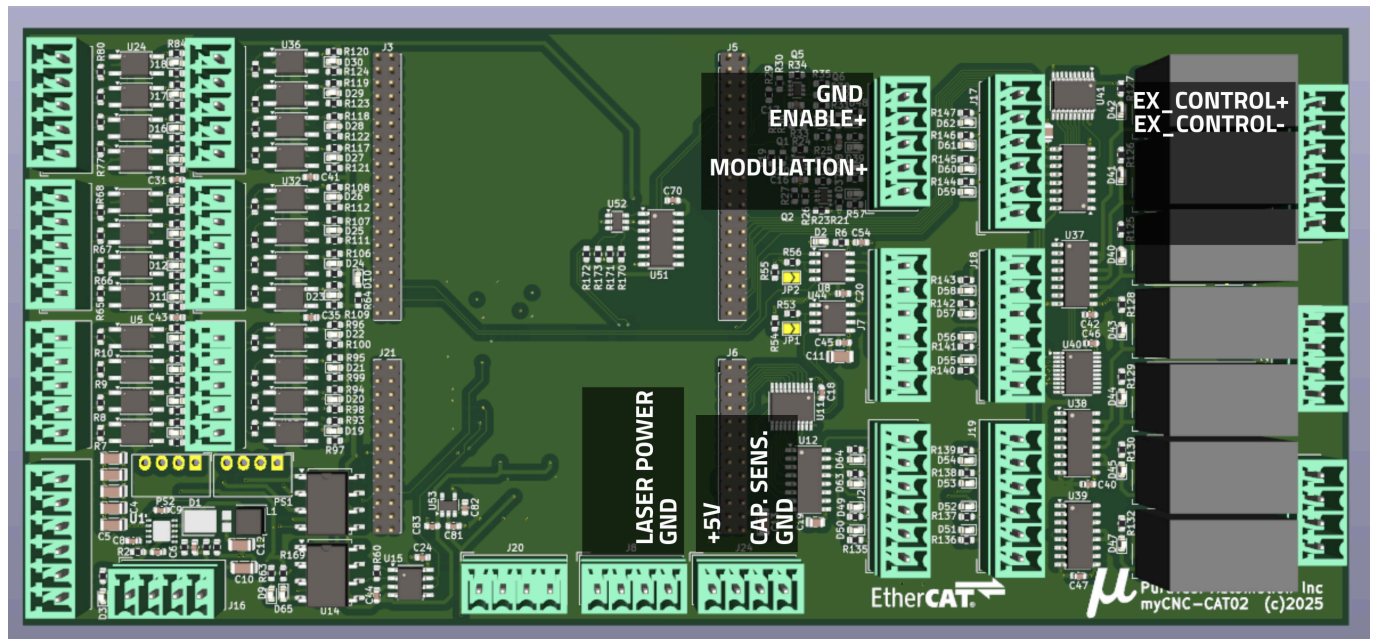
## Laser Cutting

The myCNC-CAT02 is well-suited for laser cutting applications:

- Dedicated Focus & Height Control: The independent 2 auxiliary axes provide precise control over laser focus and height

Please see the following diagram for the CAT02 port info relevant to laser cutting operations:





For more info on laser cutting, see the [Laser Cutting](#) manual.

From:  
<http://cnc42.com/> - myCNC Online Documentation

Permanent link:  
<http://cnc42.com/mycnc/ethercat>

Last update: 2025/07/02 14:48

