

MyCNC profiles

MyCNC software can be flexibly configured for a wide range of application. Complete machine configuration is stored in Profile - folder that contains all the screen configuration, machine settings, macros, PLC procedures etc.

Profile folders are placed in “myCNC/profiles” folder in User configuration folder. “User configuration folder” is OS dependant folder which can be for example:

- Linux -

```
/home/user_name/.config/...
```

- MS Windows (Old) -

```
C:/My Documents/...
```

- MS Windows (Win 7) -

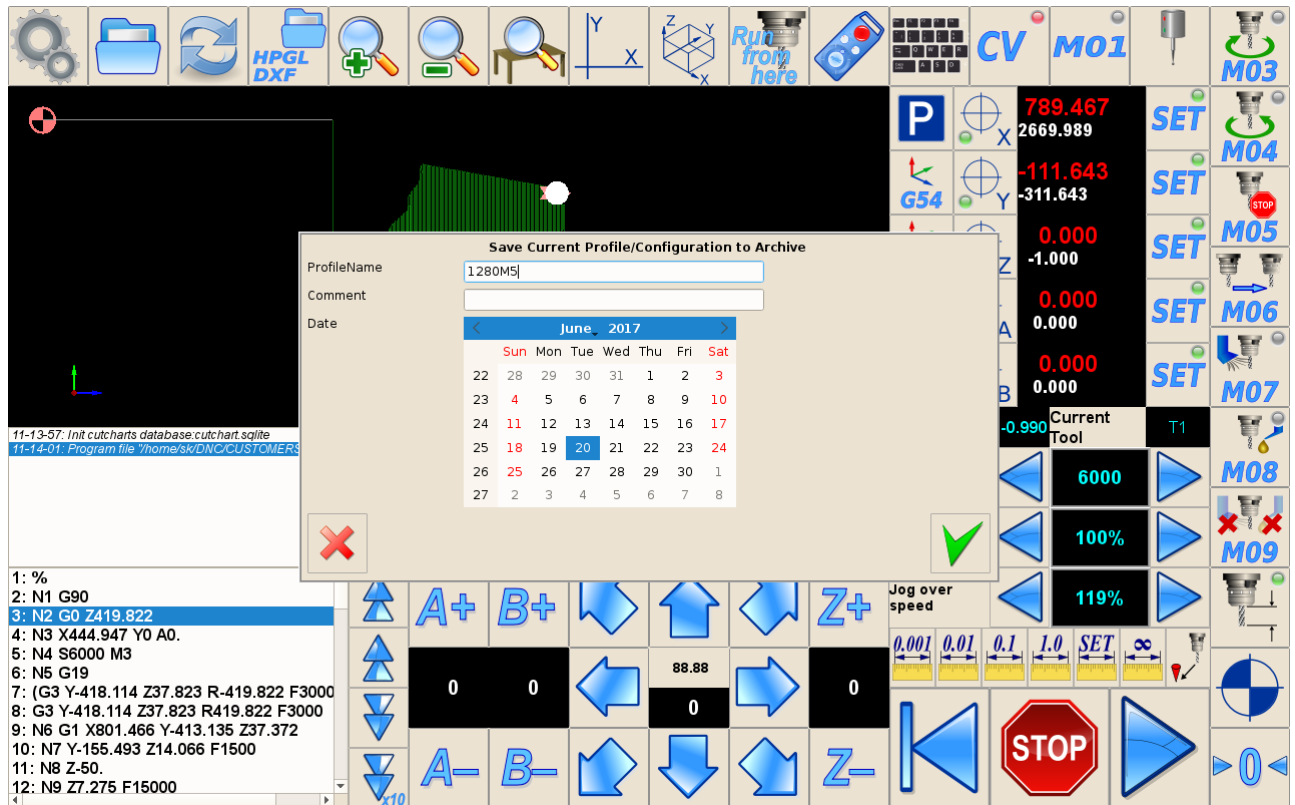
```
C:/Users/User_Name/...
```

For example for Odroid-C2 mini computer we offer profiles folder are placed in -

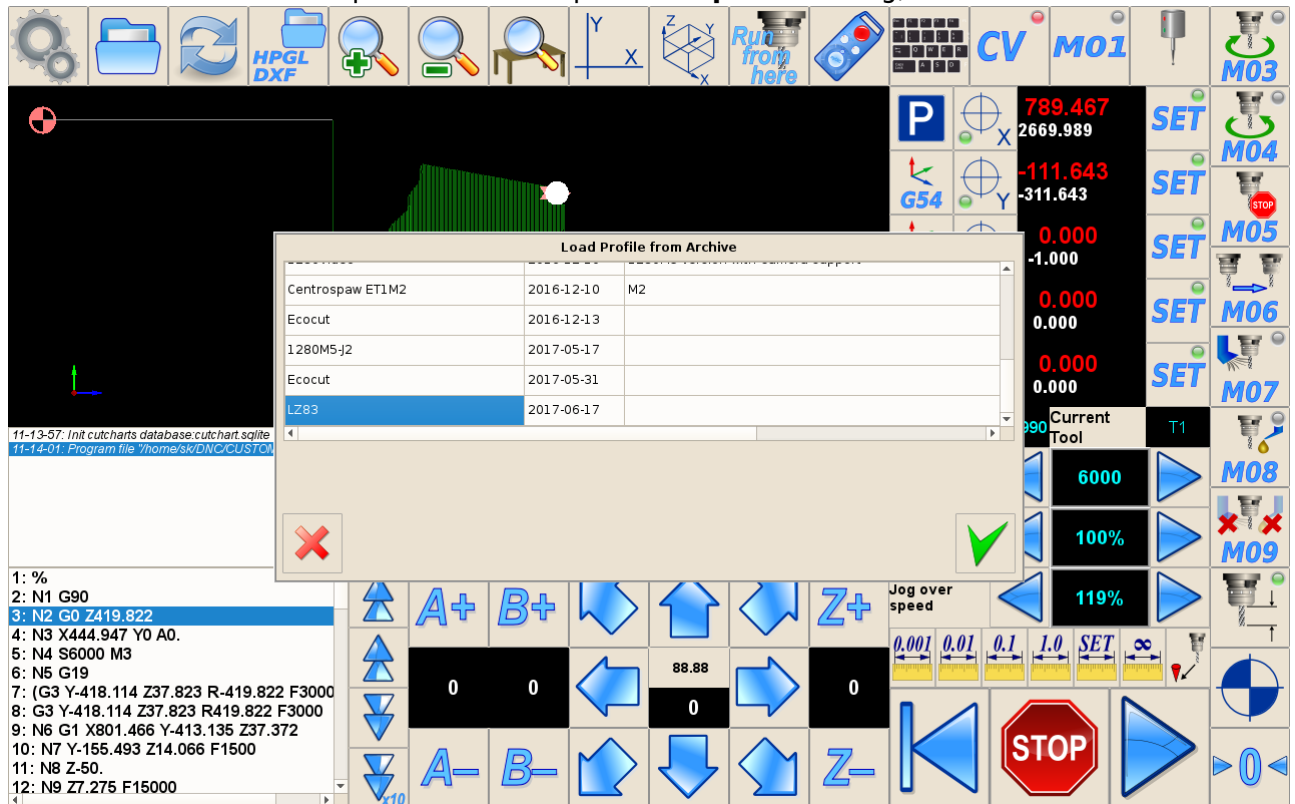
```
/home/operator/.config/myCNC/profiles
```

Save/Restore Profile Configuration

- Current Profile can be stored simply by archiving your current profile folder
- Current Profile can be stored in the local database file. Press **Ctrl+Z** to open **Save Profile dialog**, enter comments and press “Save”. A Complete set of Current profile files will be stored in the database file.



To restore Current Profile press **Ctrl-L** to open **Load profile** dialog,



select profile snapshot and press "ok".

Database file with Profiles Archive is placed in myCNC working folder in myCNC/db/profiles.sqlite file.
A Full path for Odroid-C2 is

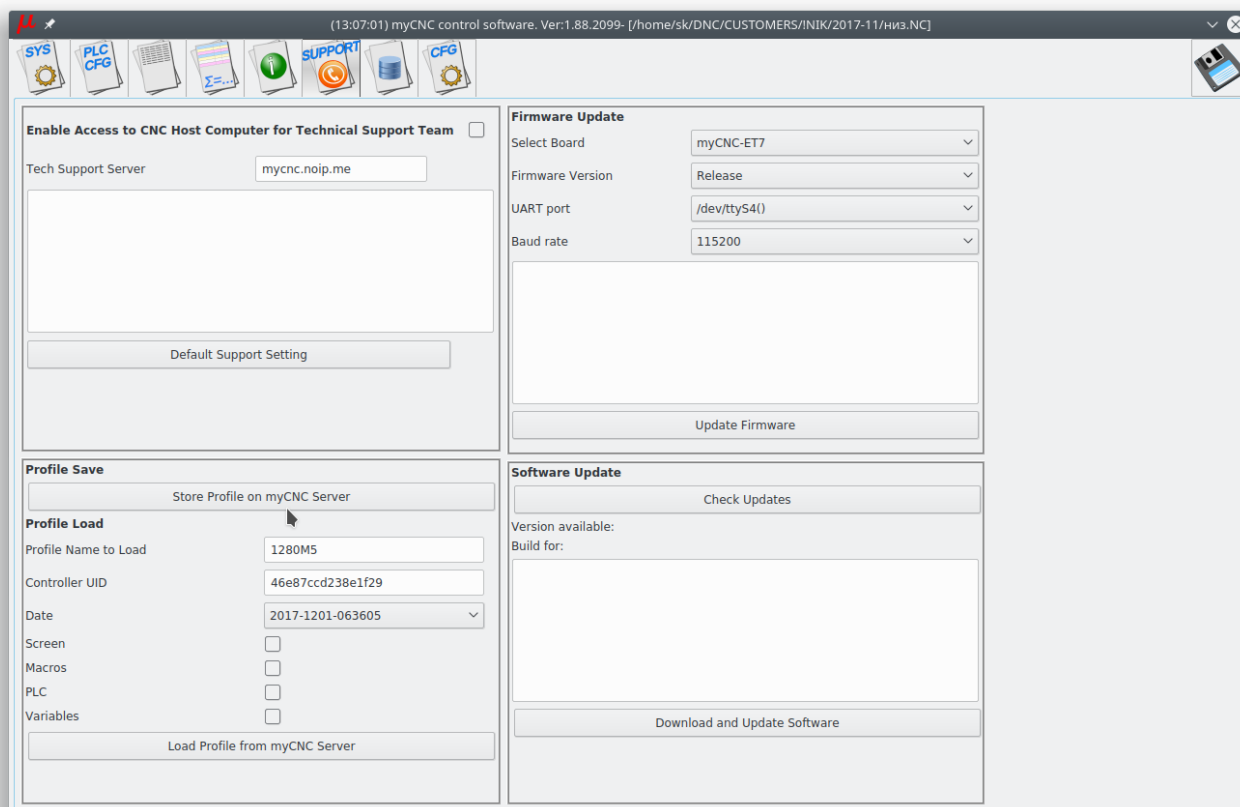
```
/home/operator/myCNC/db/profiles.sqlite
```

for MS Windows it can be

C:/MyCNC64/db/profiles.sqlite

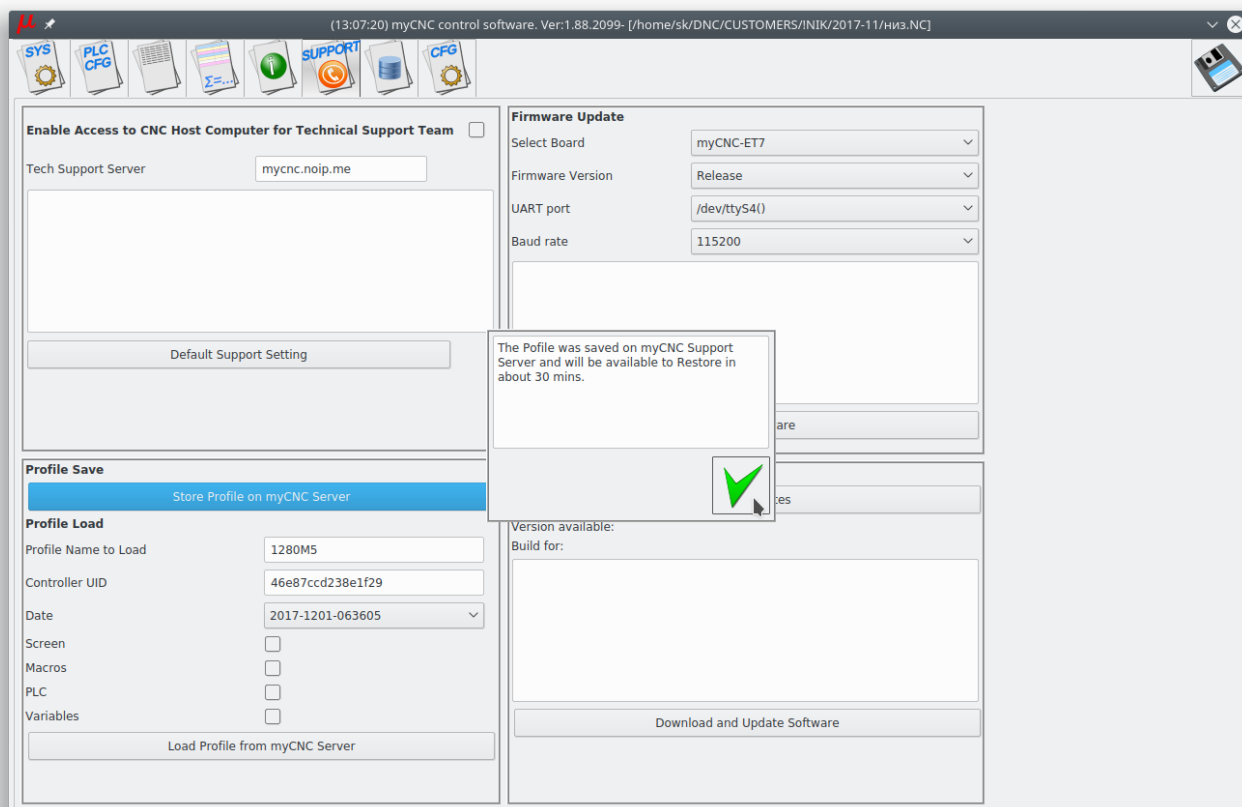
Store/Restore and Update Profile data to/from myCNC Server

Current Profile can be stored, restored or updated from myCNC Server. Store, restore and update profile can be made in the “Support” dialog.



To Store Current profile snapshot

To Store Current profile snapshot on myCNC Server press button **Store Profile on myCNC Server**. You will get a confirmation message after the profile stored.

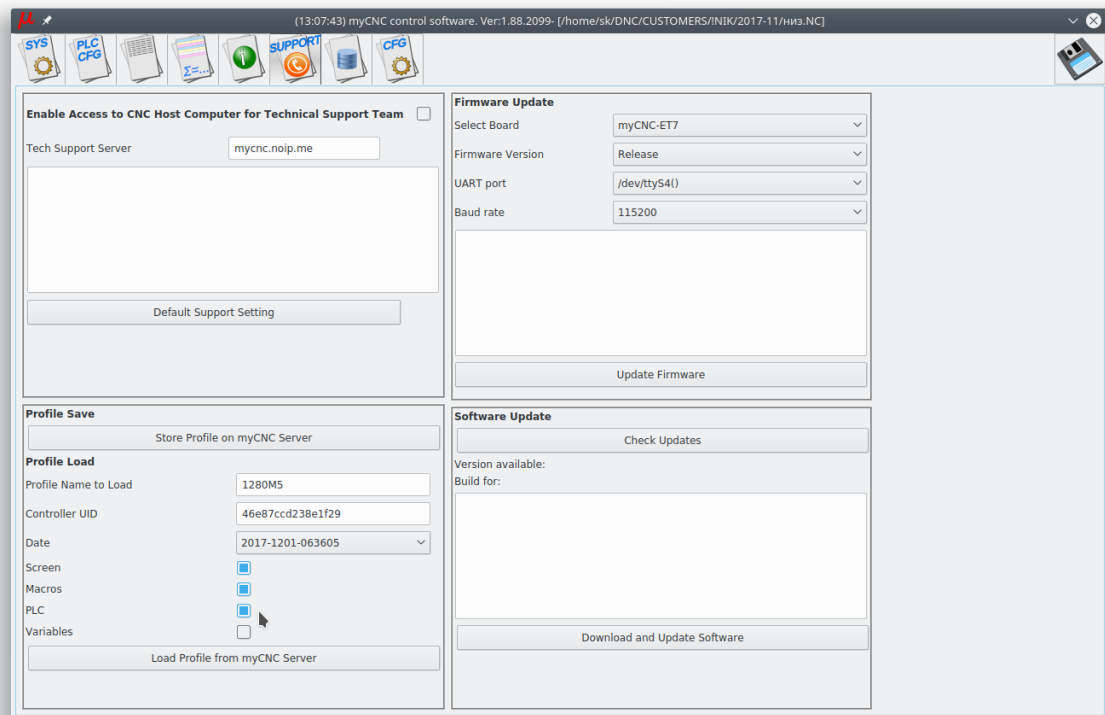


Your profile name, controller unique ID and current date and time are stored with all profile data. You will be able to restore data exactly for your machine (pair profile-controller ID) and selected date.

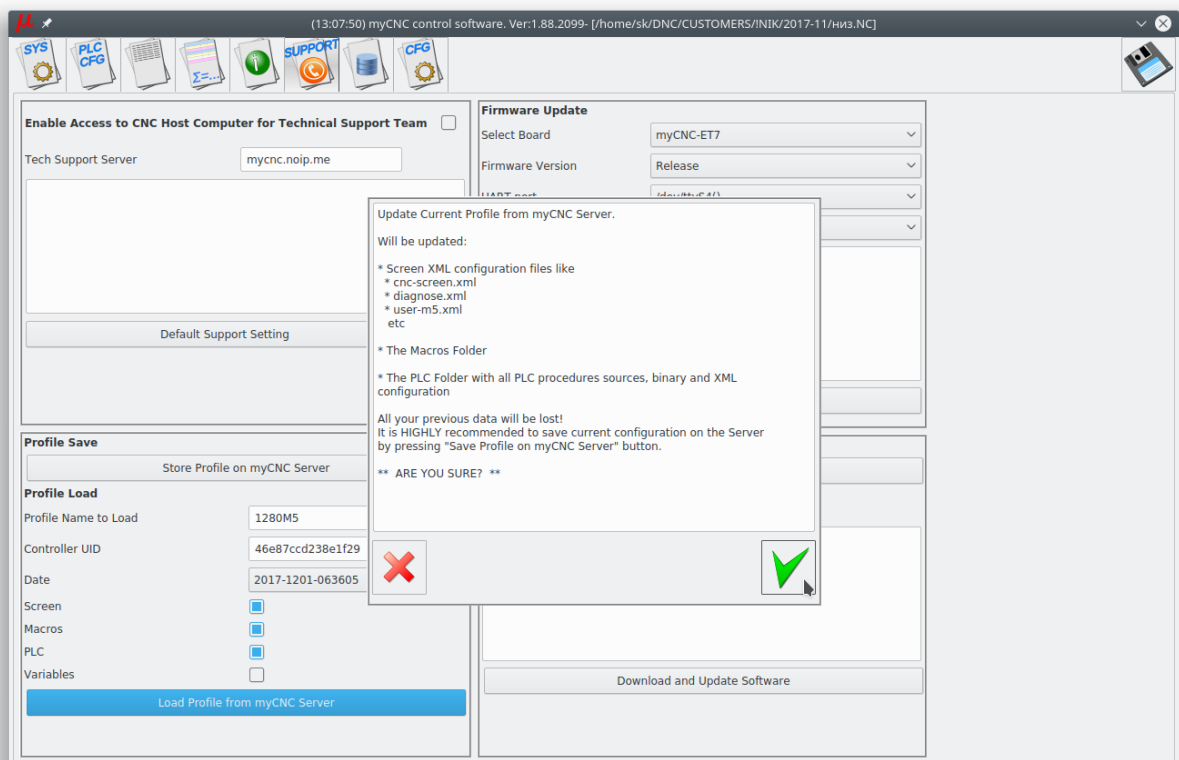
To Restore profile from myCNC Server

- **Profile Name to Load** - Current profile name is filled automatically.
- **Controller UID** - Your Controller unique ID is filled automatically.
- **Date** - Select date to load from ComboBox
- Select which components of the profile you like to restore from myCNC Server
 - **Screen** - screen configuration files like "cnc-screen.xml", "diagnose.xml", "editor.xml", "parking.xml" etc
 - **Macros** - macro files from "Macro" folder
 - **PLC** - plc folder with all Hardware and Software PLC files
 - **Variables** - All current settings from "cnc-variables.xml"

For example **Screen, macros and PLC** are selected to restore from myCNC Server



- Press “Load Profile from myCNC Server” to load selected profile data.
- Press OK in confirmation dialog



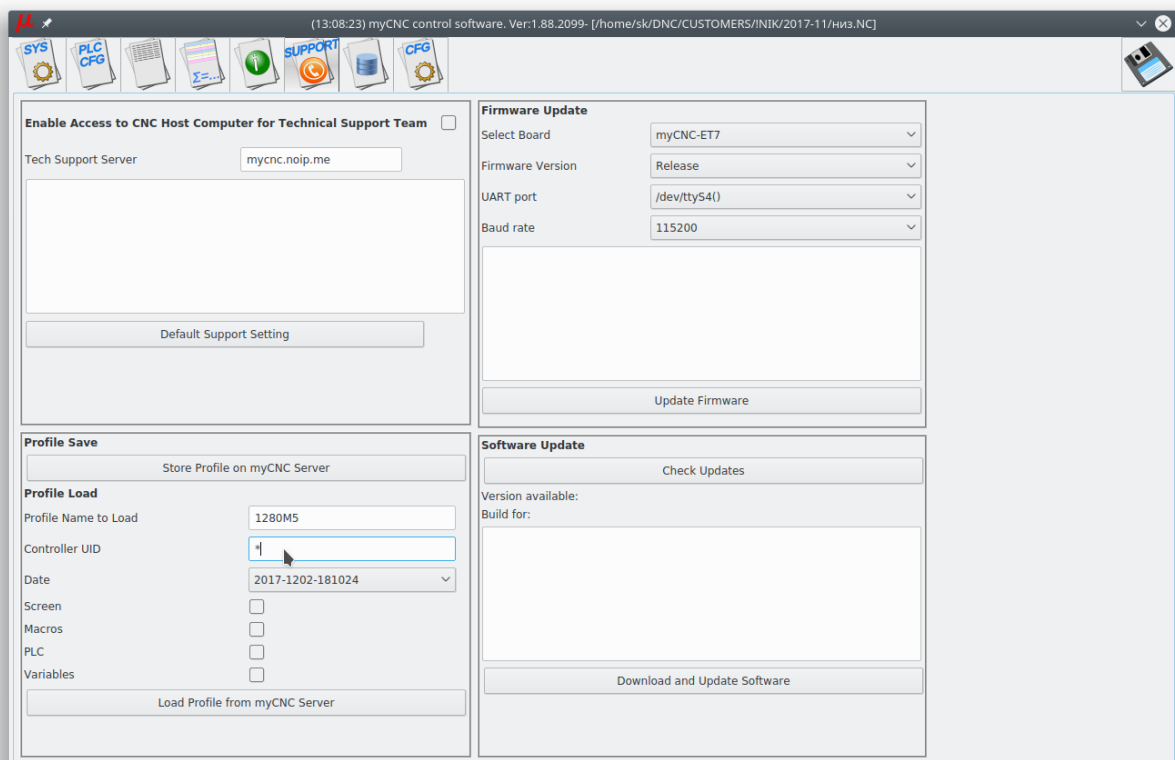
To Update profile from myCNC Server

Note

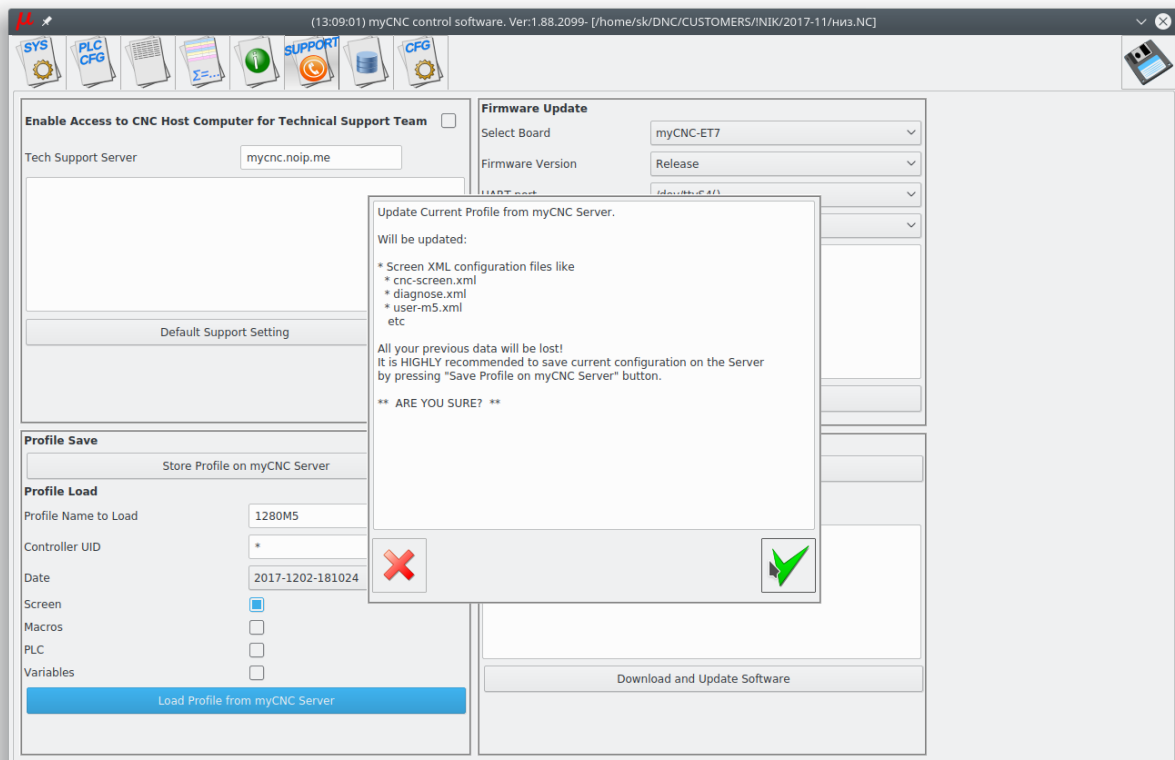
You may wish to update your profile to the last version from your myCNC Server.

1. Updating Screen files make sense since you would get a new look of your profile
2. Updating Macros and PLC is completely up to you. You may update it if you didn't make any changes in PLC or Macros
3. !!! Never !!! update cnc-variables because you will lose all your settings data and will need to set up system again (like pulse per unit settings and other)

- **Profile Name to Load** - Current profile name is filled automatically.
- **Controller UID** - Put "*" symbol to get the last **Default** version of your profile.



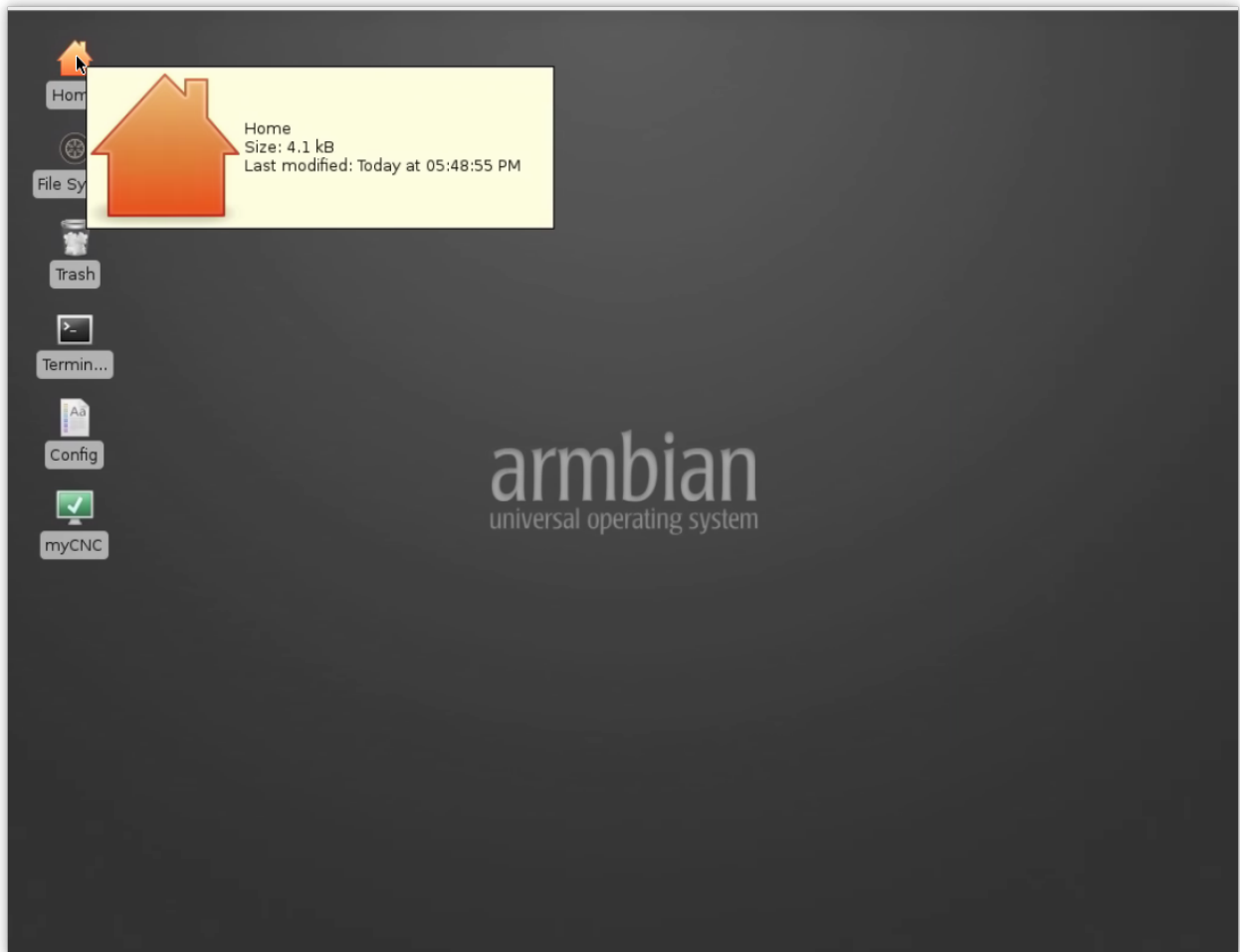
- **Date** - Select the last date from the ComboBox
- Select which components of the profile you like to restore from myCNC Server
 - **Screen** - screen configuration files like "cnc-screen.xml", "diagnose.xml", "editor.xml", "parking.xml" etc
 - **Macros** - macro files from "Macro" folder
 - **PLC** - plc folder with all Hardware and Software PLC files
 - **Variables** - Do NOT select variables when update the profile from myCNC Server.
- Press "Load Profile from myCNC Server" to load selected profile data.
- Press OK in confirmation dialog



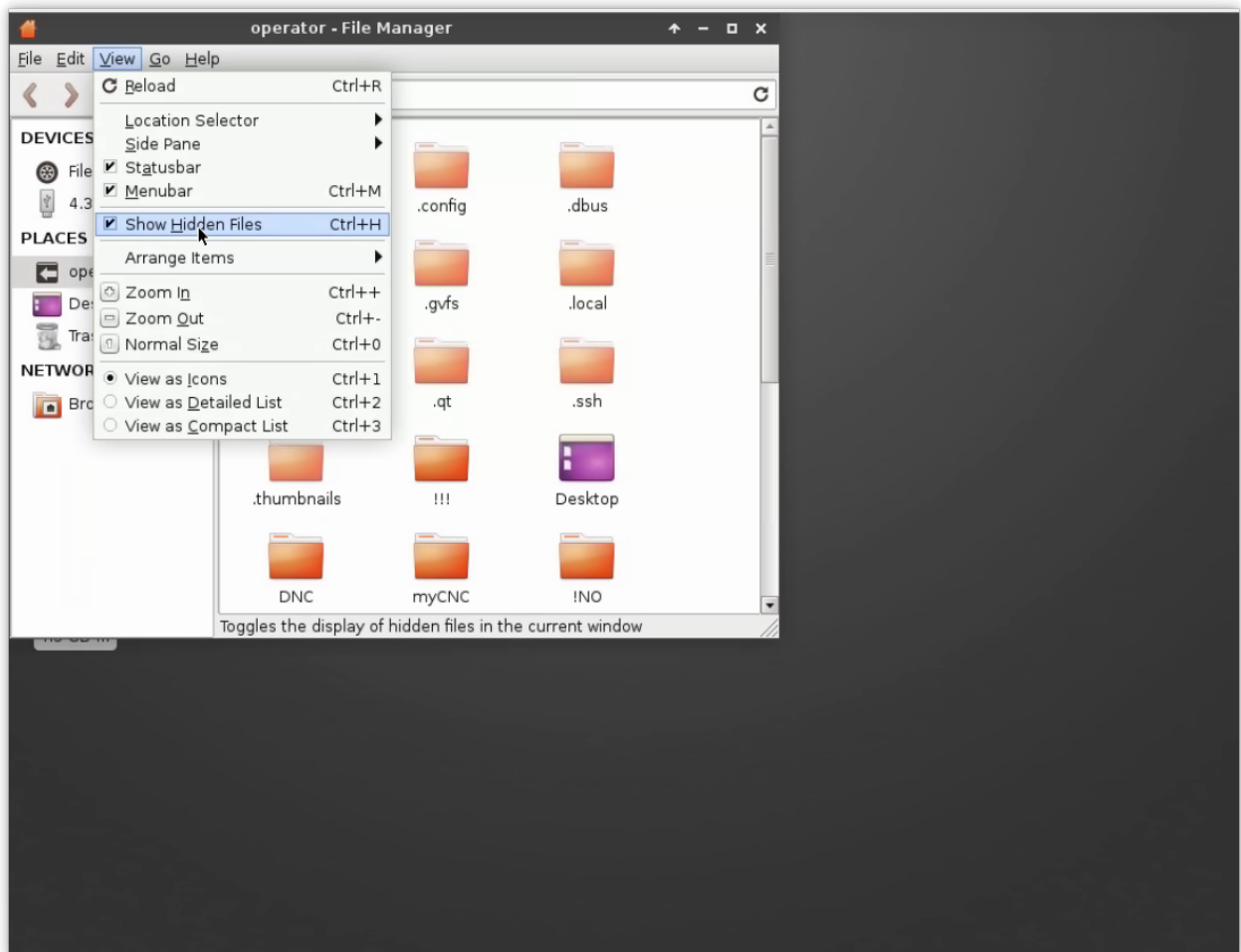
Manual restore Profile Configuration

A computer uses cache memory (RAM) while saving files to increase SD cards performance. The most frequently written file is **cnc-variables.xml**. In case of power failure profile configuration file "cnc-variables.xml" might be damaged. To restore profile configuration you can manually copy this file to profile folder from the archive. For example,

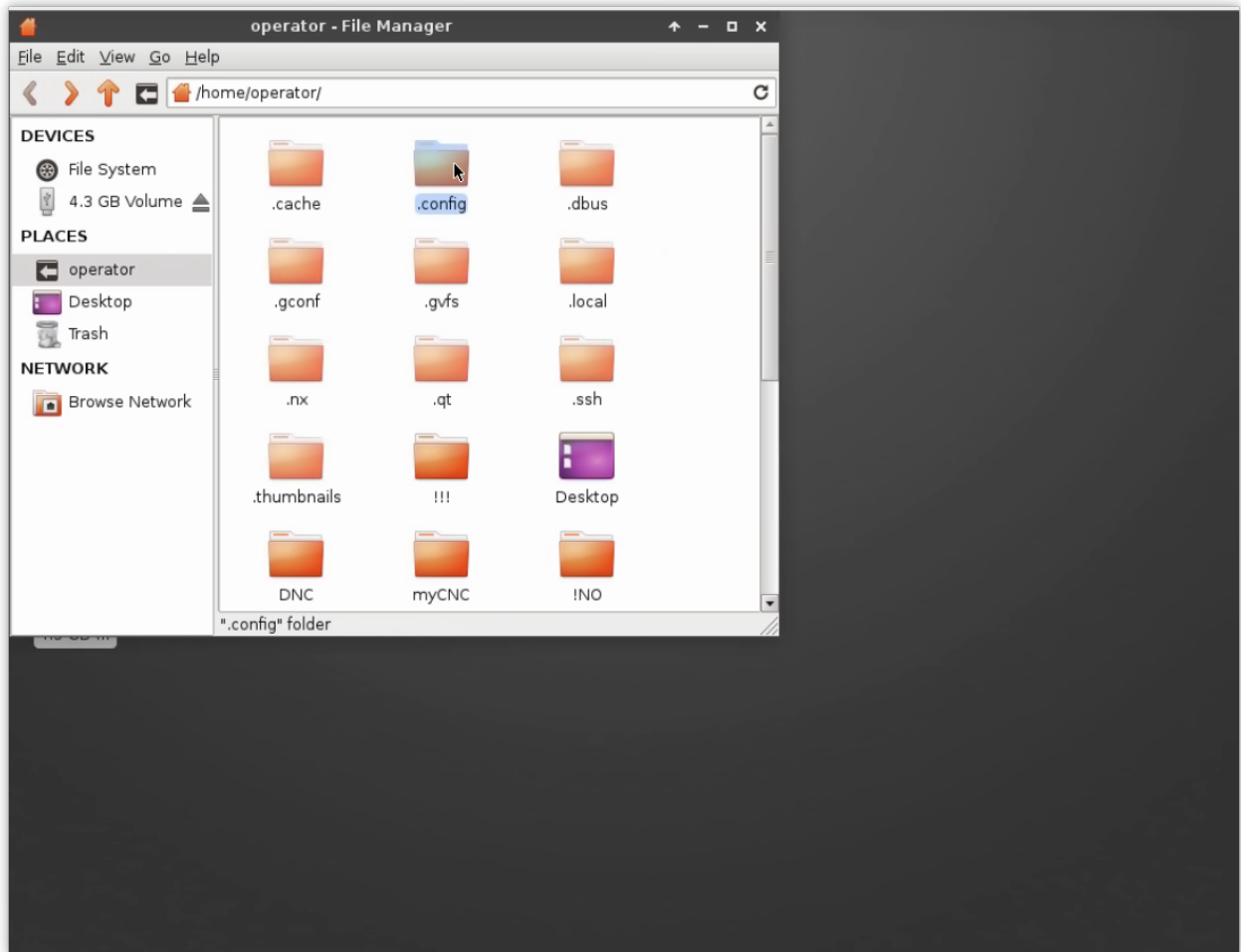
- put "cnc-variables.xml" file to USB disk and insert it into the SBC.
- Close myCNC software to see the desktop



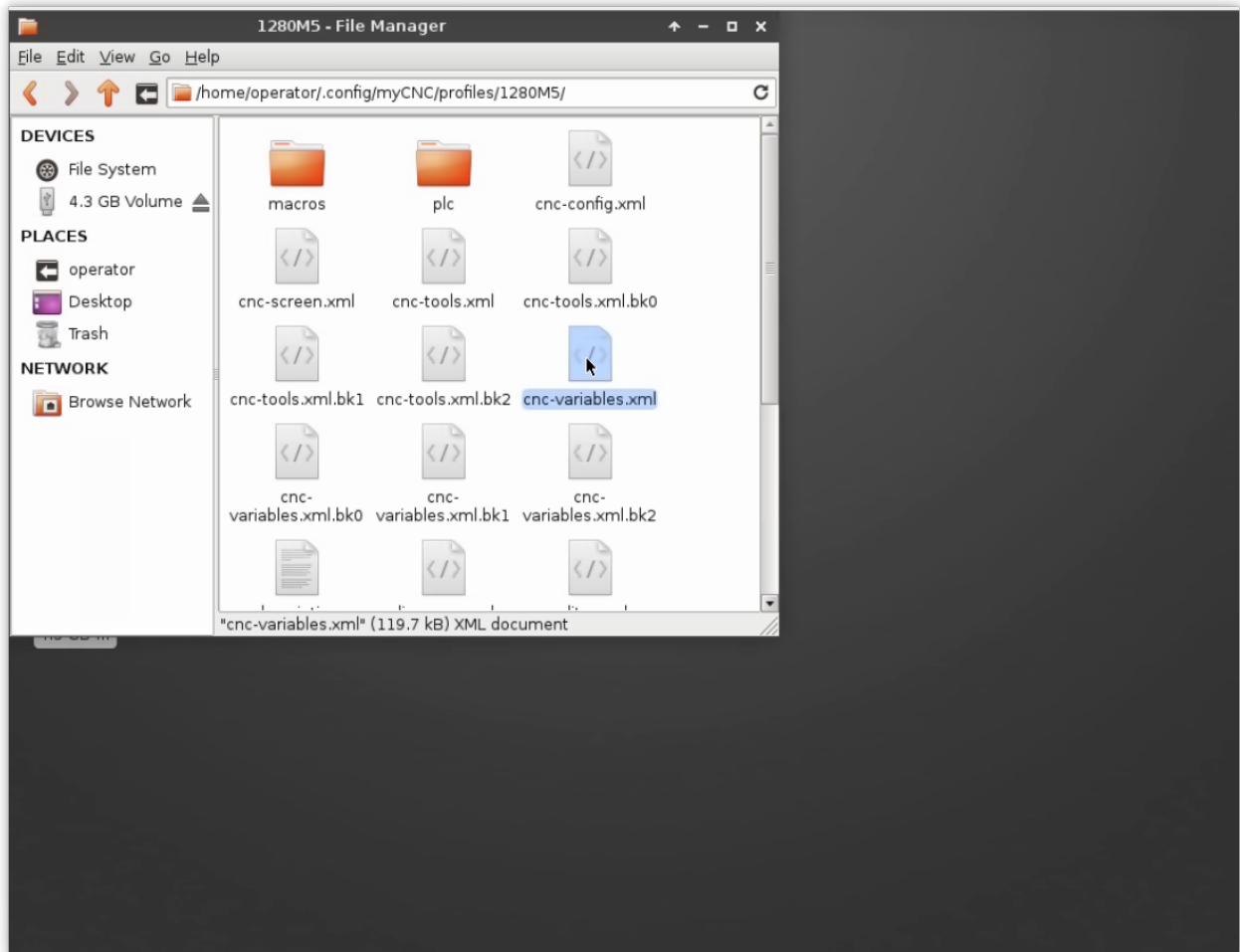
- Click on **Home** icon to open **User Home Folder** (usually it's `/home/operator`) in a File Manager.
- Click “Show Hidden Files” checkbox in “View” menu to see Hidden files (files and folders in Linux systems started with dot symbol “.” considered as “hidden”, user configuration folder in Linux is “.config”)



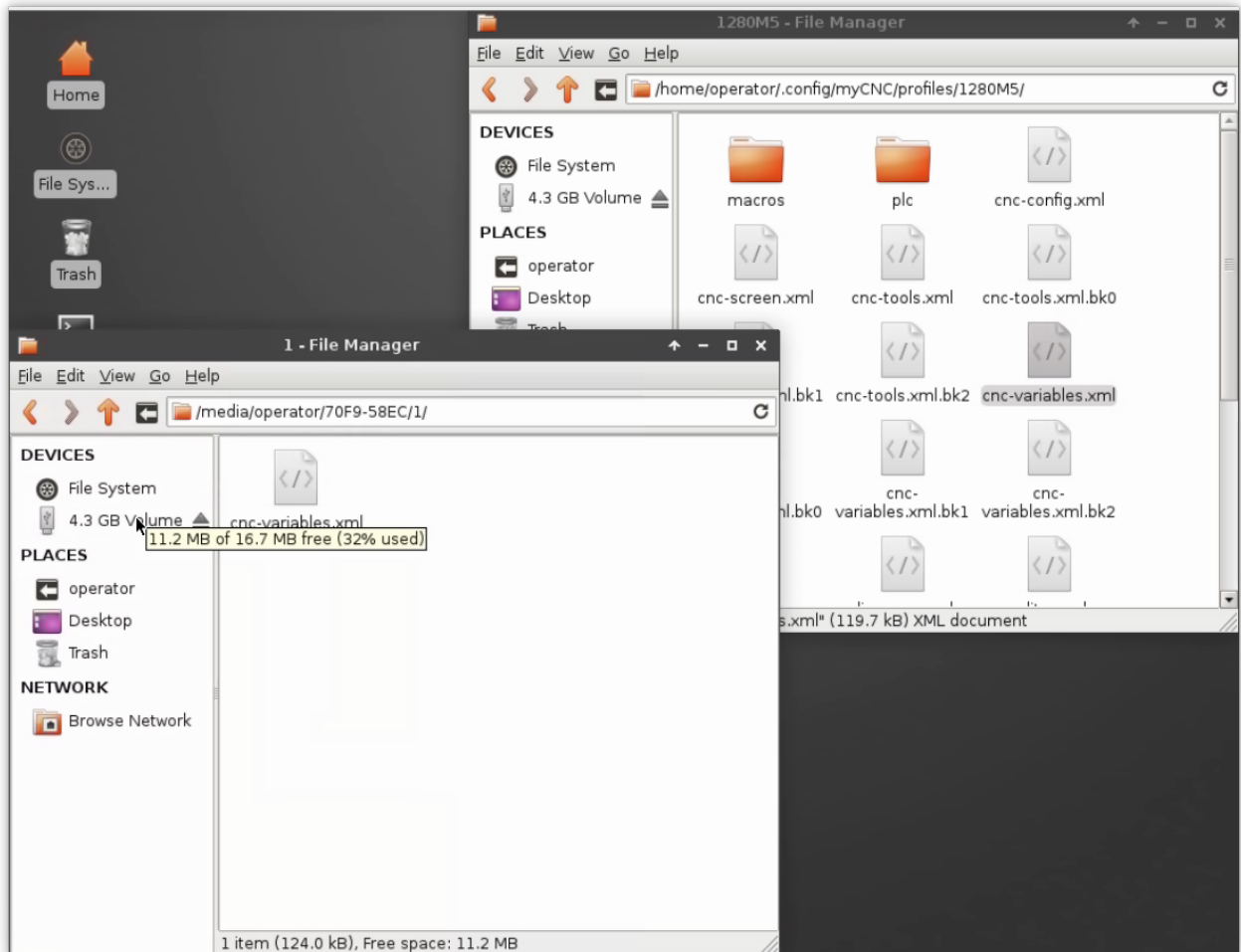
- Goto `"/home/operator/.config/myCNC/profiles_YOUR_PROFILE"` folder



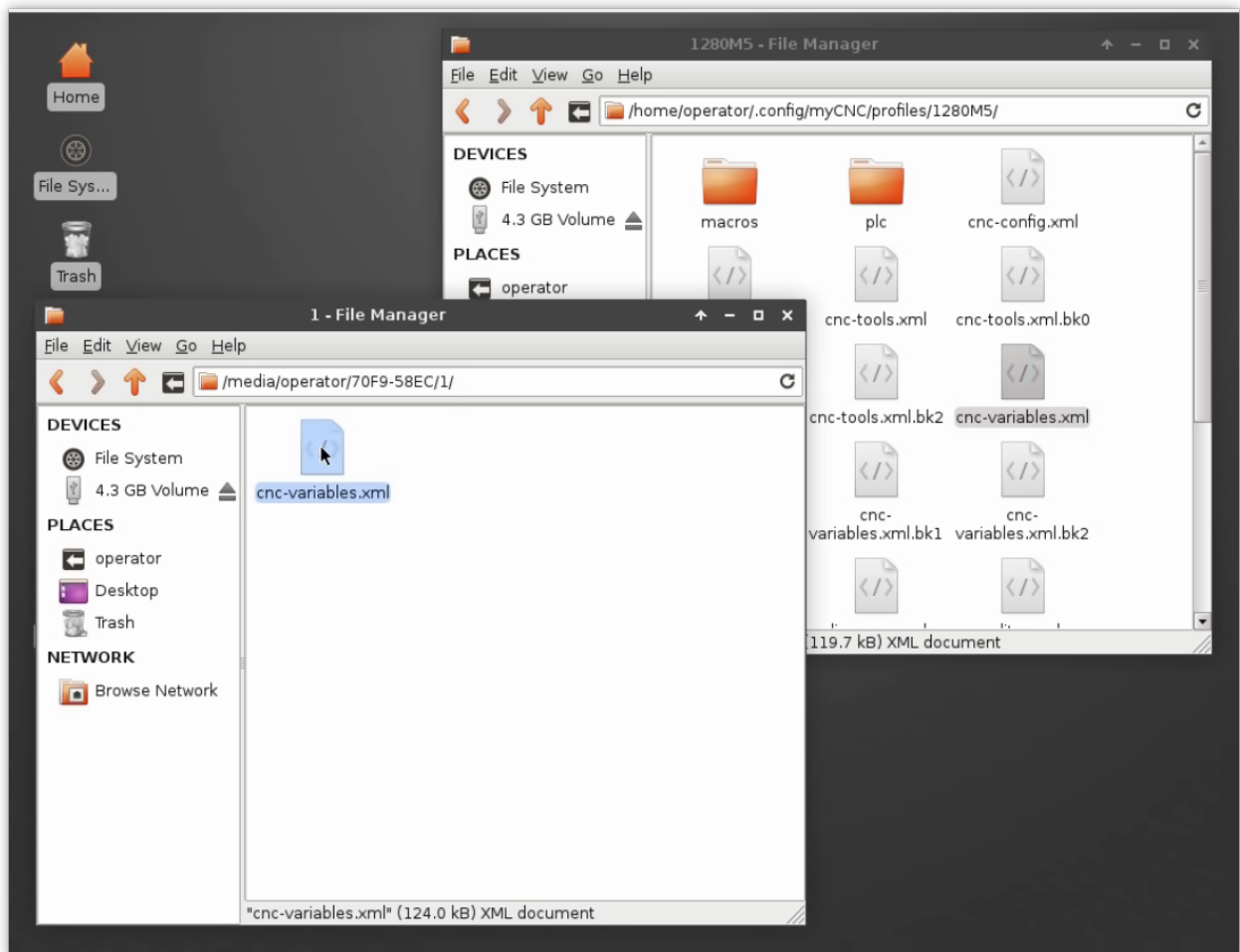
- Find cnc-variables.xml file



- Open another File Manager (press “Home” icon again), goto USB disk (you can find it in left lanel under “DEVICES” section)



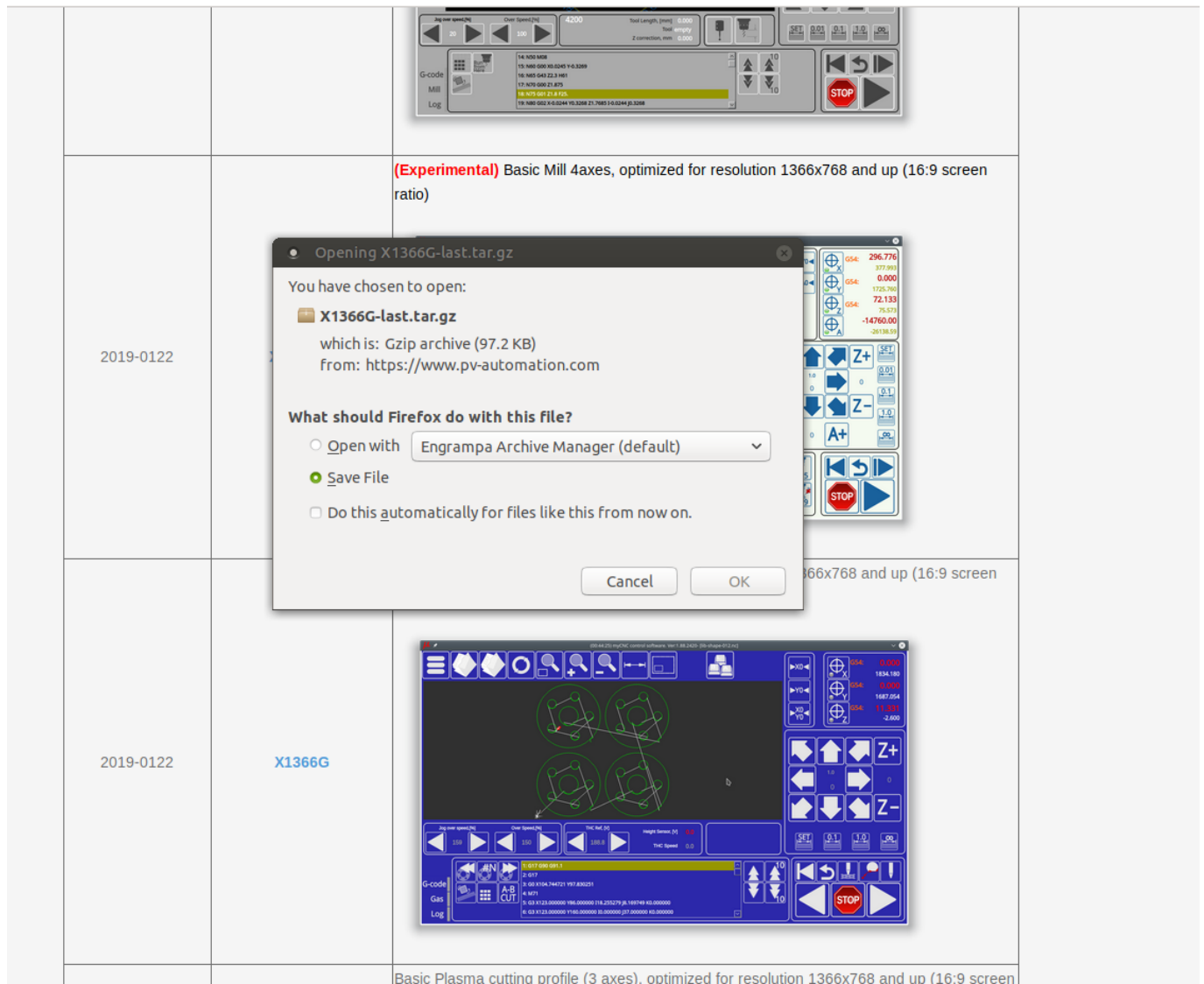
- Copy the file from USB to YOUR_PROFILE folder



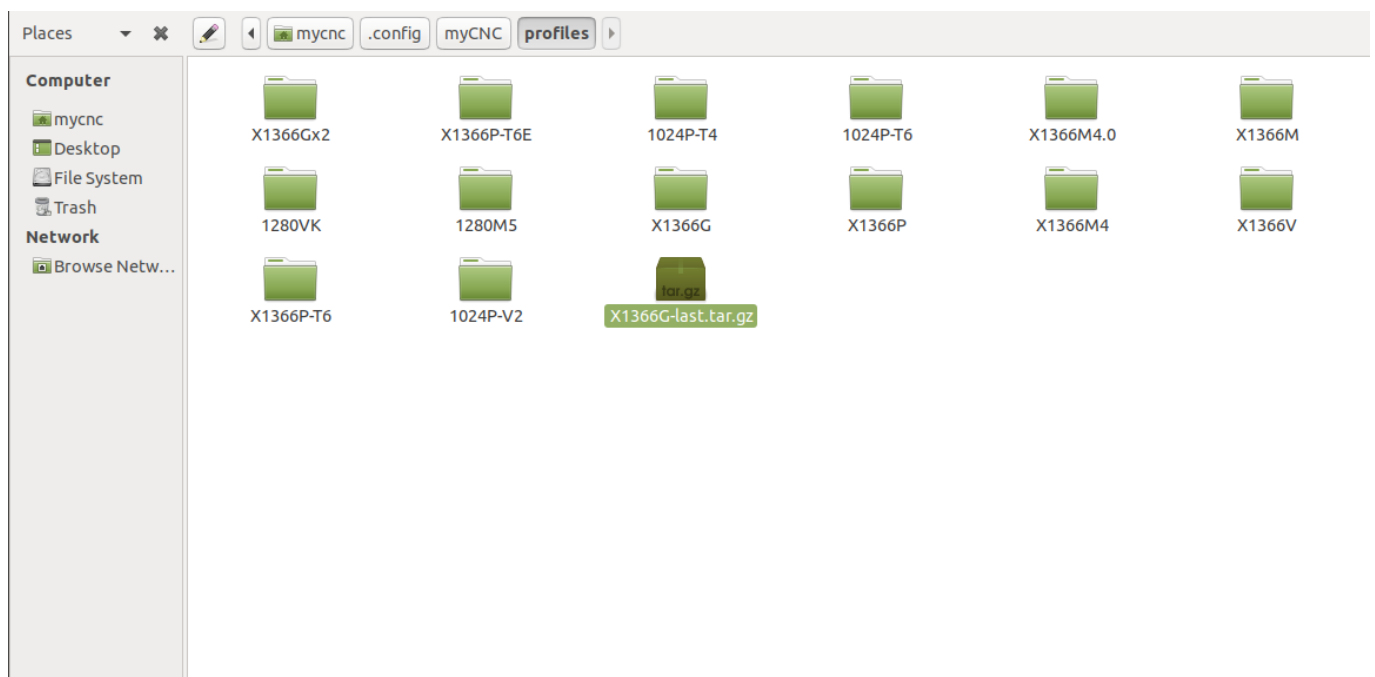
Manual profile update

In case there is no recently updated version of the profile you are looking for on the server, you can manually download it from the [main site](#). Please follow the instructions below to manually update your profile to the latest available version:

1. Go to the [main site's Download page](#) and scroll down to the **Profiles** section, then click on the profile you would like to update and select **Save**

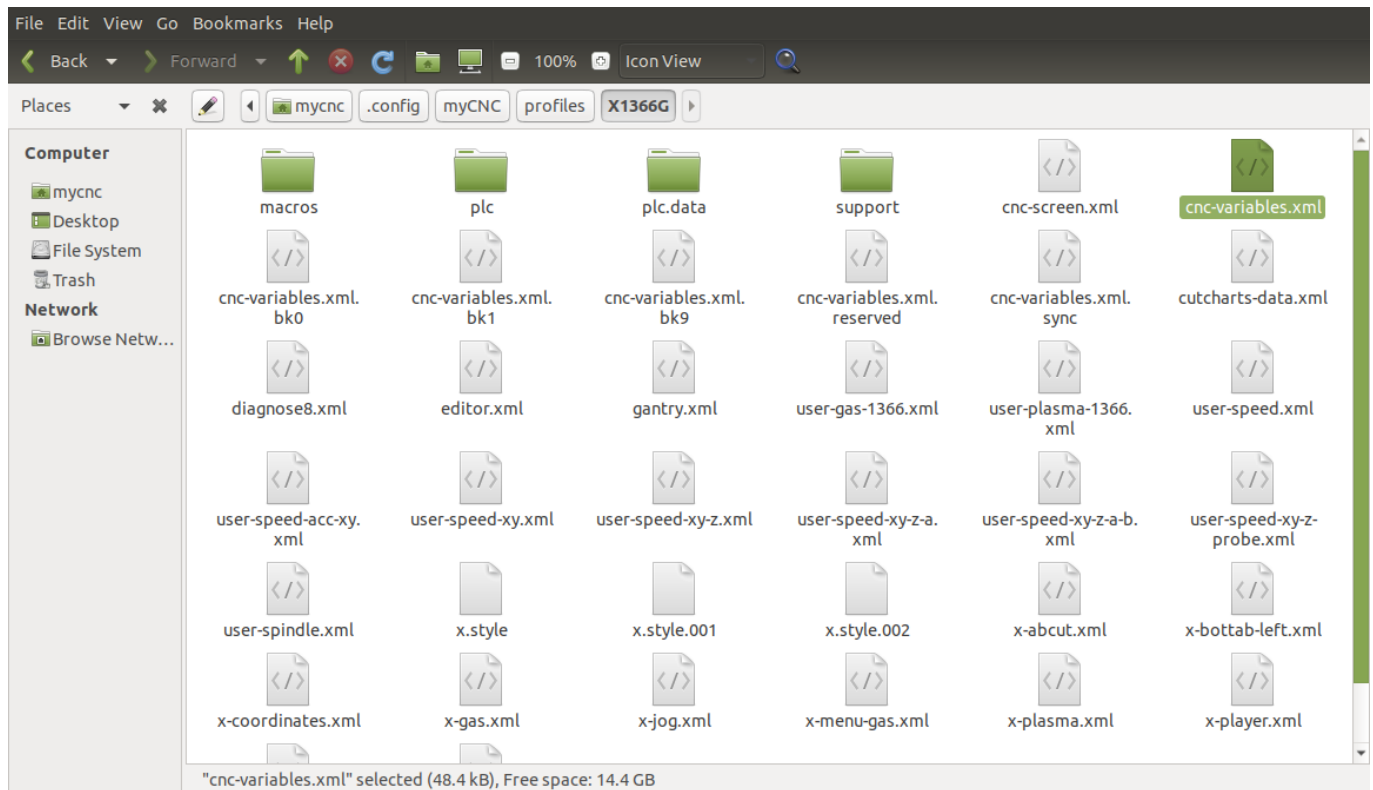


2. Copy the archive file that you have downloaded to home > .config > myCNC > profiles

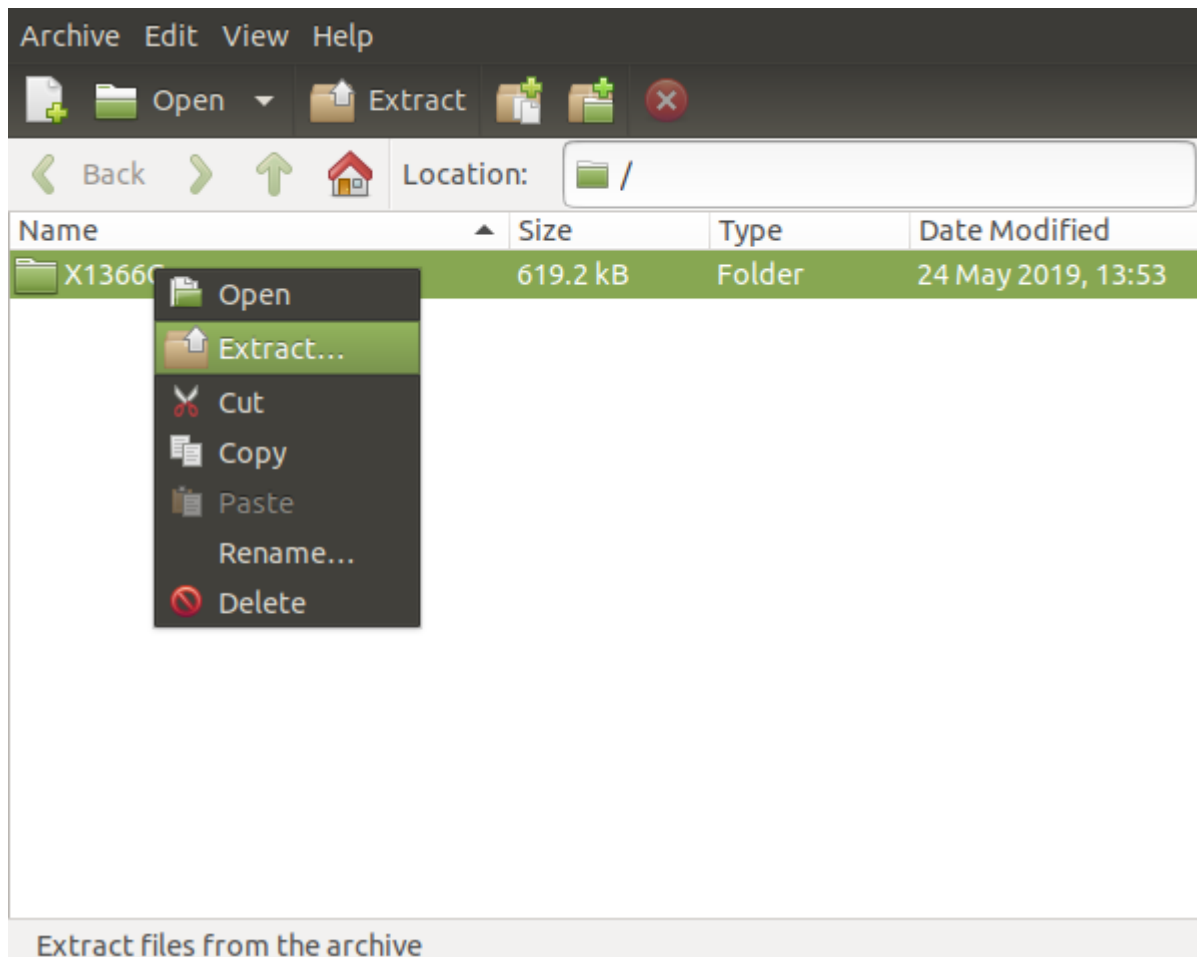


3. If you would like to keep your preferences from your previous profile, go to that profile's folder and

copy the **cnc-variables.xml** file over to your Desktop.



4. Extract the folder from the copied archive into the Profiles folder. If you want to add your previous settings from Step 3, replace the **cnc-variables.xml** file in your new profile folder with the one that you have copied to your desktop.



5. Relaunch myCNC software.

The manual profile update should now be complete.

From:

<http://docs.pv-automation.com/> - **myCNC Online Documentation**

Permanent link:

http://docs.pv-automation.com/mycnc/mycnc_profiles?rev=1558979794

Last update: **2019/05/27 13:56**

