

Camera Troubleshooting

The full manual on regular camera setup is available here: [CNC Vision Setup](#).

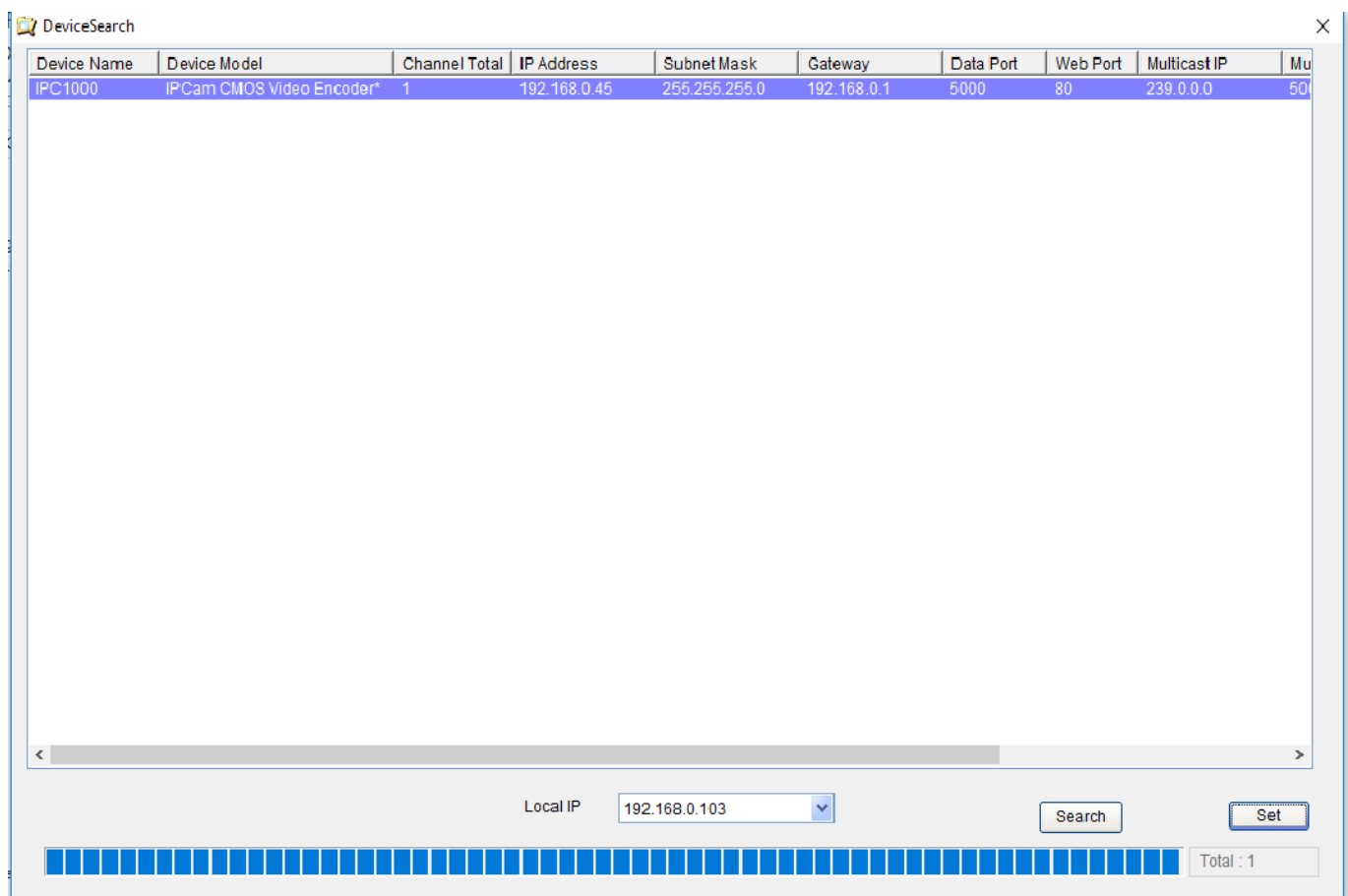
The steps described in this manual are typically not required to set up a camera purchased from Puruvesi Automation, since the camera comes pre-configured out of the box, and should be used only in situations when access to deep camera settings is required.

Using a utility program to configure the camera

NOTE: The application used in this manual is Windows-only, so it is recommended to use a Windows computer or a Virtual Machine to edit the camera settings.

In order to change the camera IP address, camera resolution, or other camera settings, use the following instructions:

- Download the utility application [archive](#).
- Open the .7z archive and extract the DeviceSearch folder to a location of your choice on your computer.
- Launch the DeviceSearch.exe file from the folder that you have extracted.
- The following screen will be shown:



- To search for a camera that's connected through a LAN cable, select your Local IP address and click 'Search':

DeviceSearch

Device Name	Device Model	Channel Total	IP Address	Subnet Mask	Gateway	Data Port	Web Port	Multicast IP	Mu
IPC1000	IPCam CMOS Video Encoder*	1	192.168.0.45	255.255.255.0	192.168.0.1	5000	80	239.0.0.0	50

Local IP

192.168.0.103

Search

Set

Total : 1

- After the camera you're looking for has appeared in the device list, select it and click 'Set'

DeviceSearch

IPC1000	IPCam CMOS Video Encoder*	1	192.168.0.45	255.255.255.0	192.168.0.1	5000	80	239.0.0.0	50
---------	---------------------------	---	--------------	---------------	-------------	------	----	-----------	----

Local IP

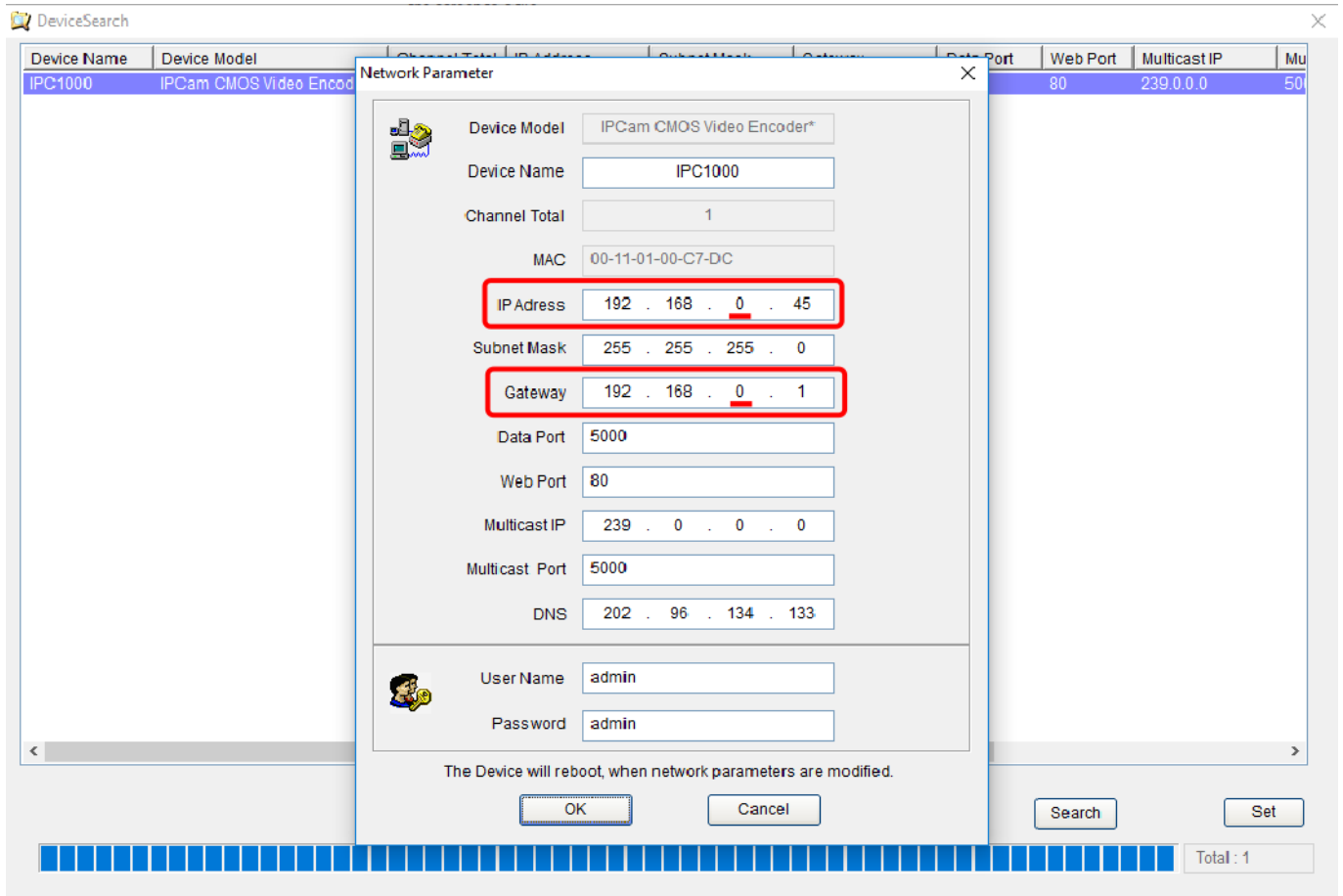
192.168.0.103

Search

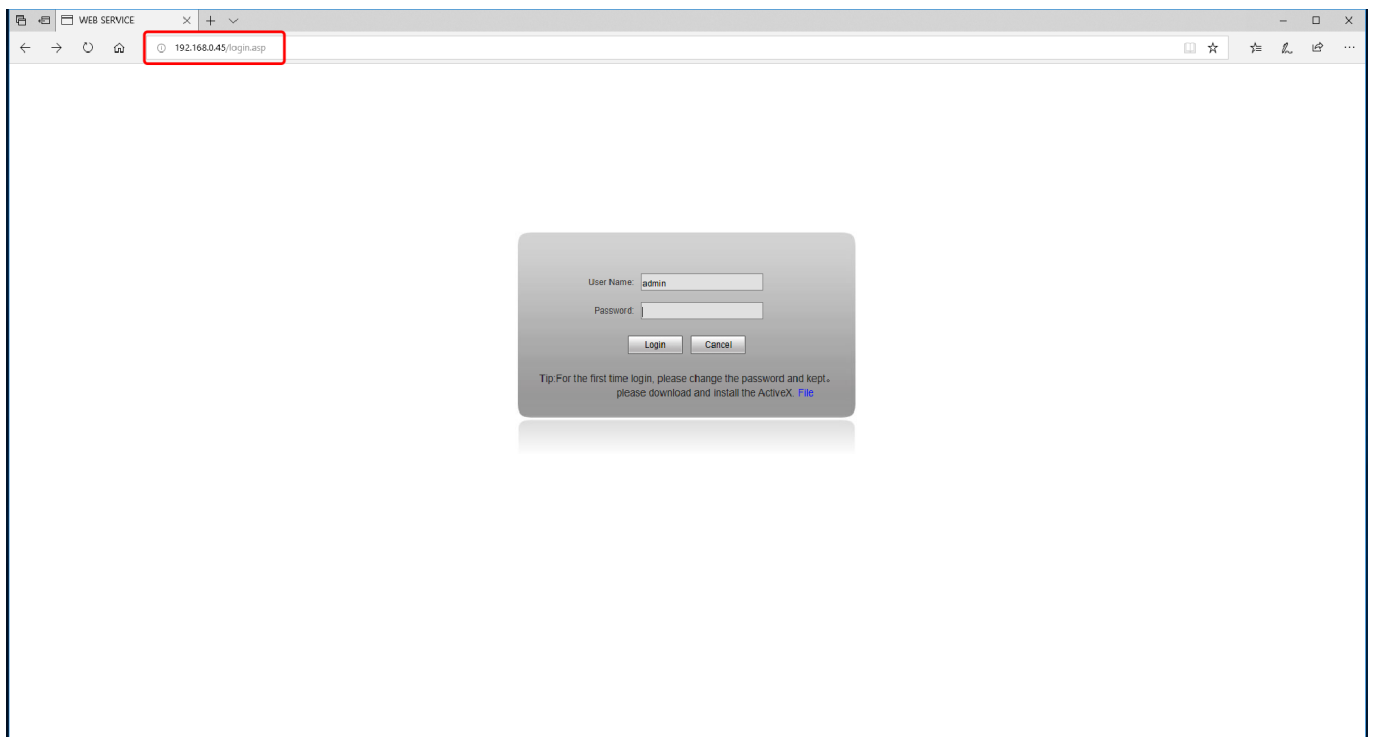
Set

Total : 1

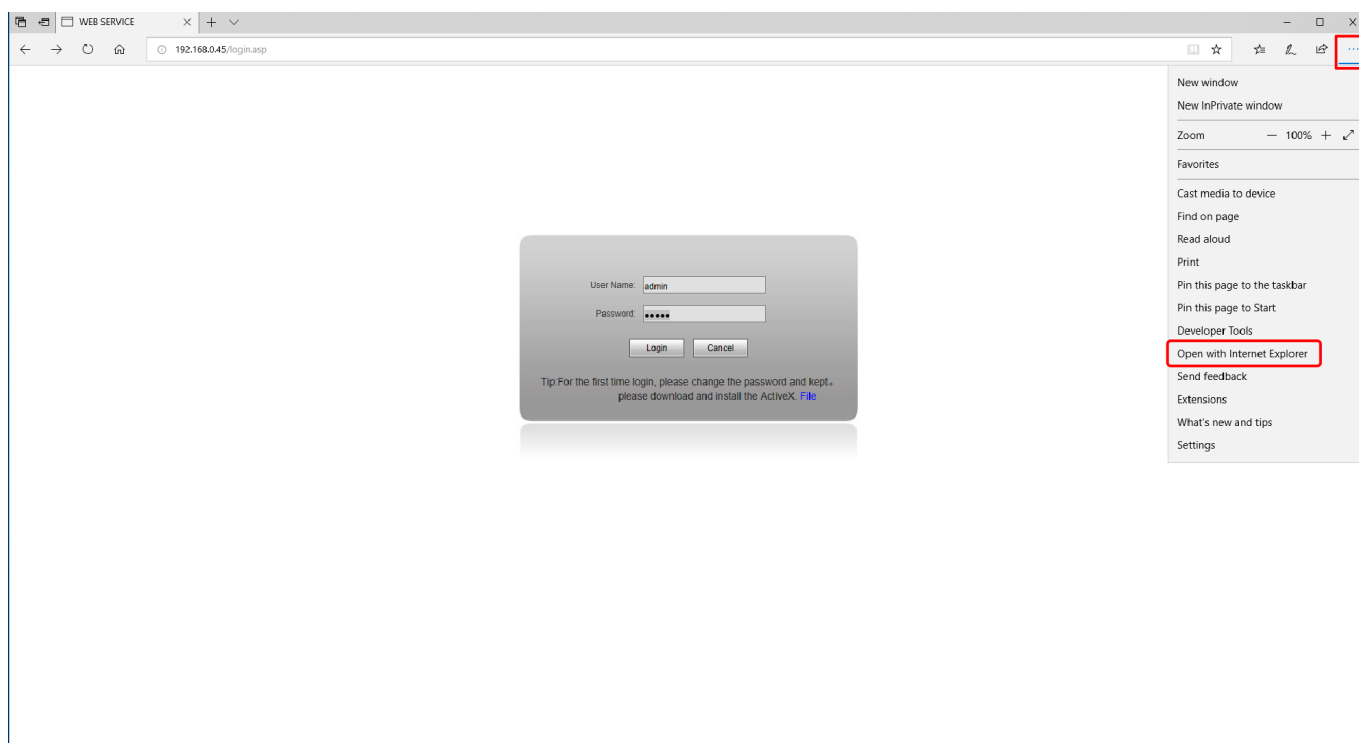
- The camera settings window will appear. In it, it is important to have the Camera IP and Gateway to the same subnet as the Local IP address from earlier (note the 0 in all three addresses in this example):



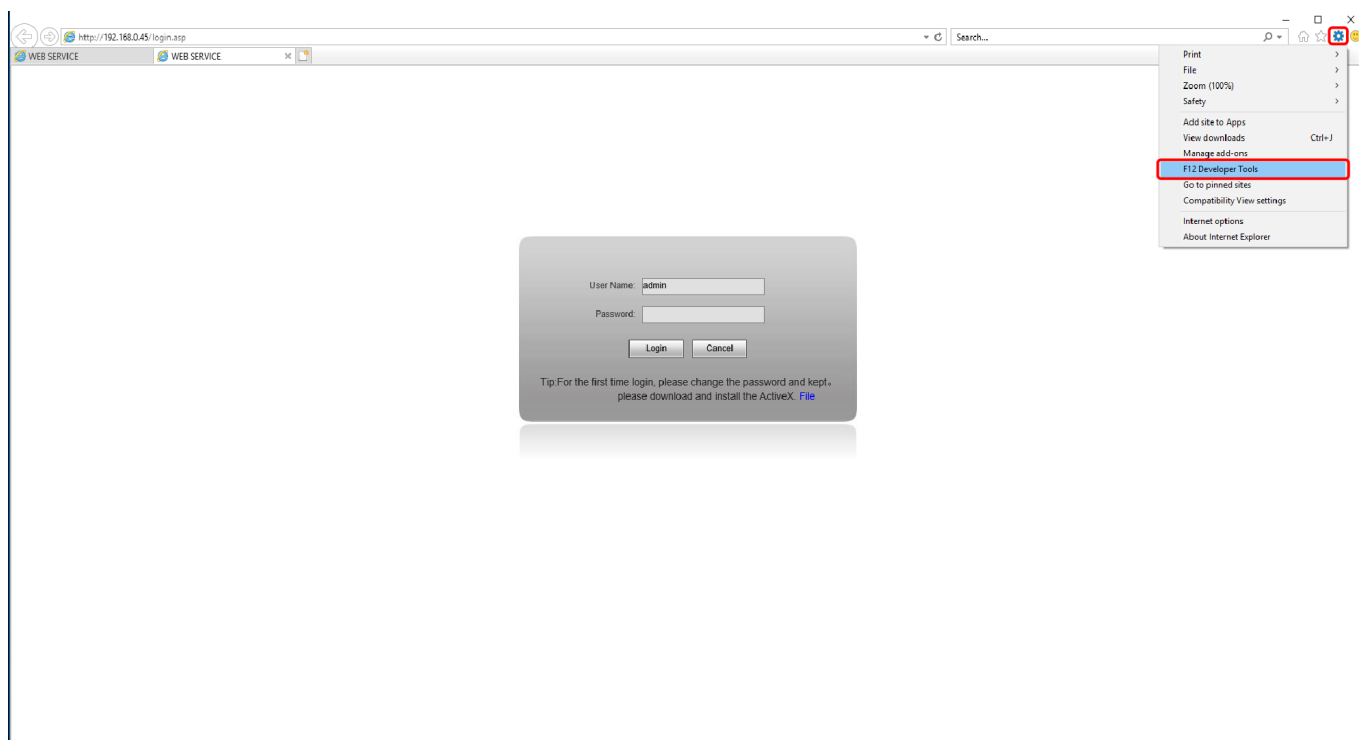
- Next, open Microsoft Edge (or Internet Explorer if available) and type in your camera IP address in your address bar:



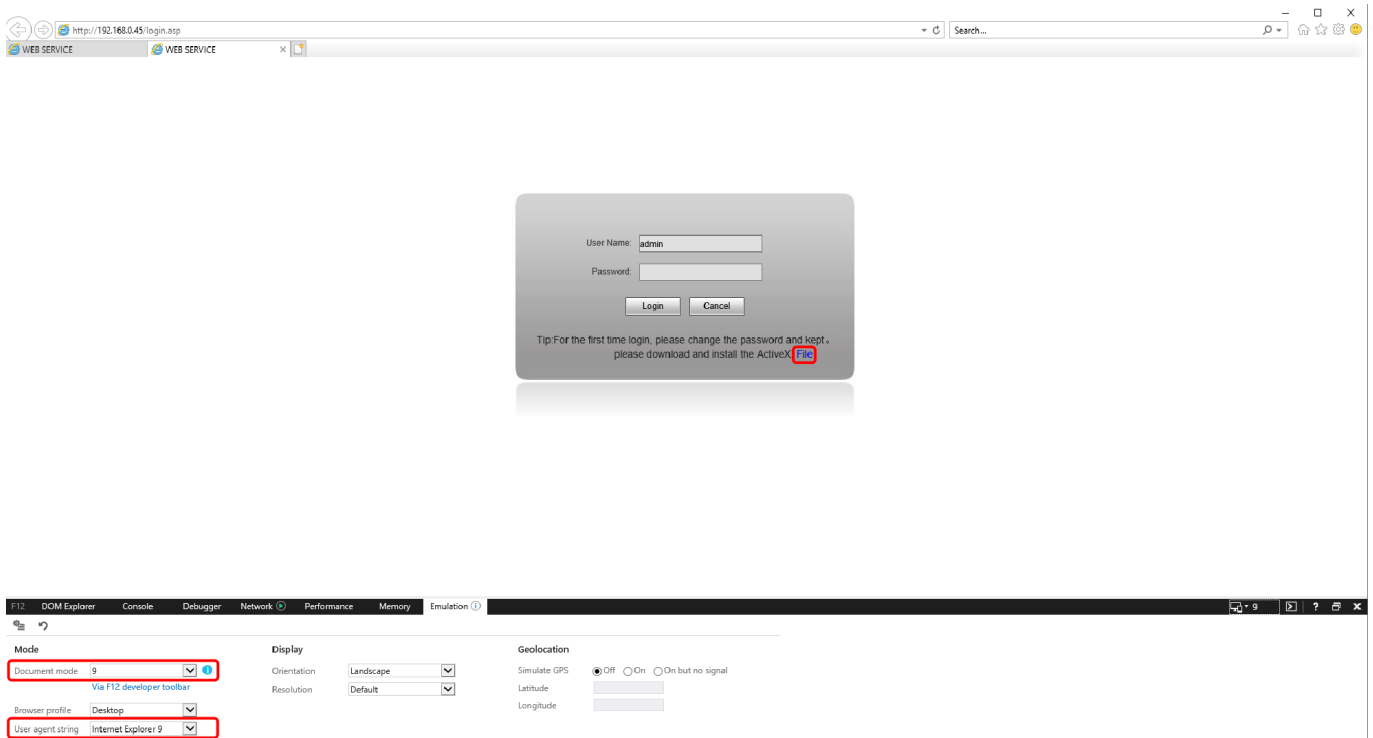
- The utility application for the provided cameras works only in Internet Explorer 9 and below. If using Microsoft Edge, go the menu and select the **Open with Internet Explorer** option:



- Once in Internet Explorer, it is necessary to use the Internet Explorer 9 (or below) version. In order to do that, if the browser version you are using is more recent than IE9, open the menu and select the F12 Developer Tools option:



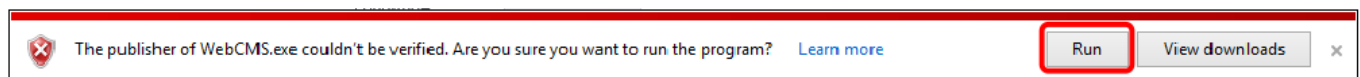
- In the Developer Tools at the bottom of your screen, navigate to the Emulation tab and choose **9** for Document Mode and **Internet Explorer 9** for User agent string. After that has been selected, click the File link in the log in window:



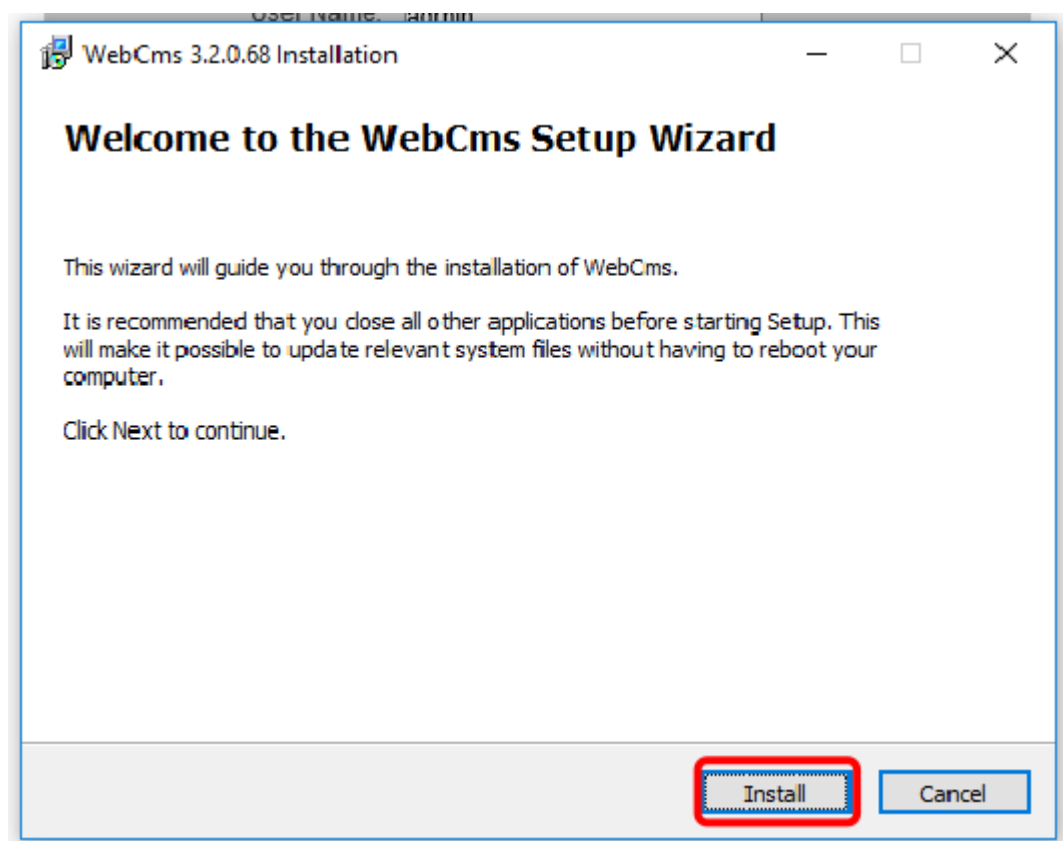
- Click the 'Run' button in the dialog which will appear at the bottom of your screen:



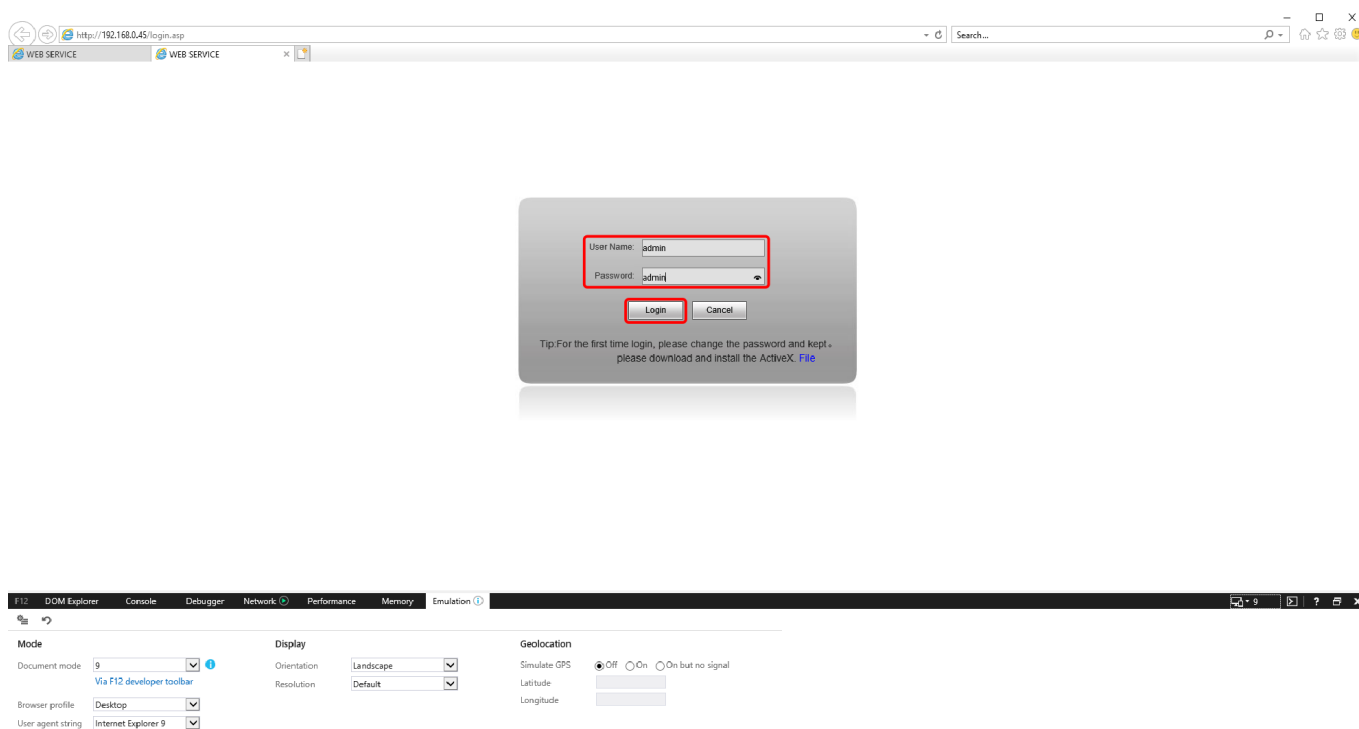
- Click the 'Run' button in the warning dialog which will appear next:



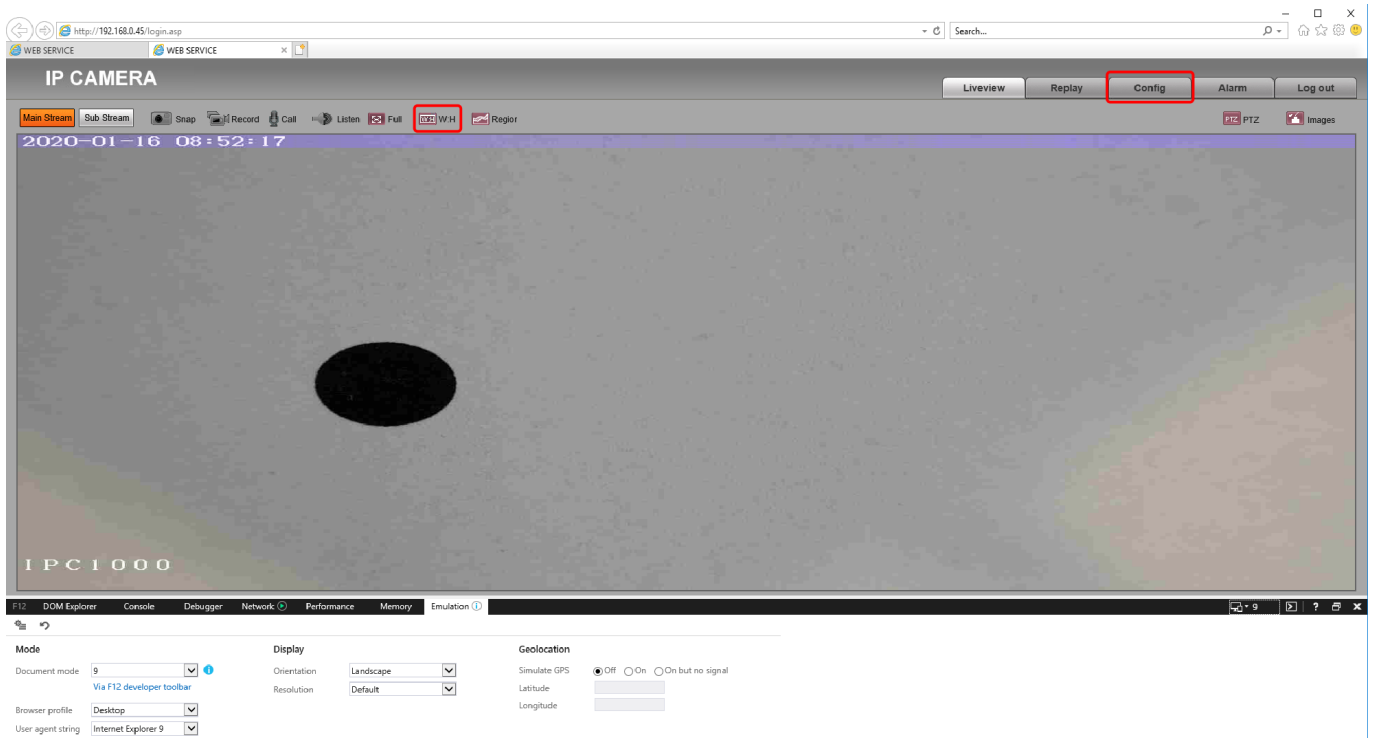
- In the window which appears, click the 'Install' button and go through the installation process:



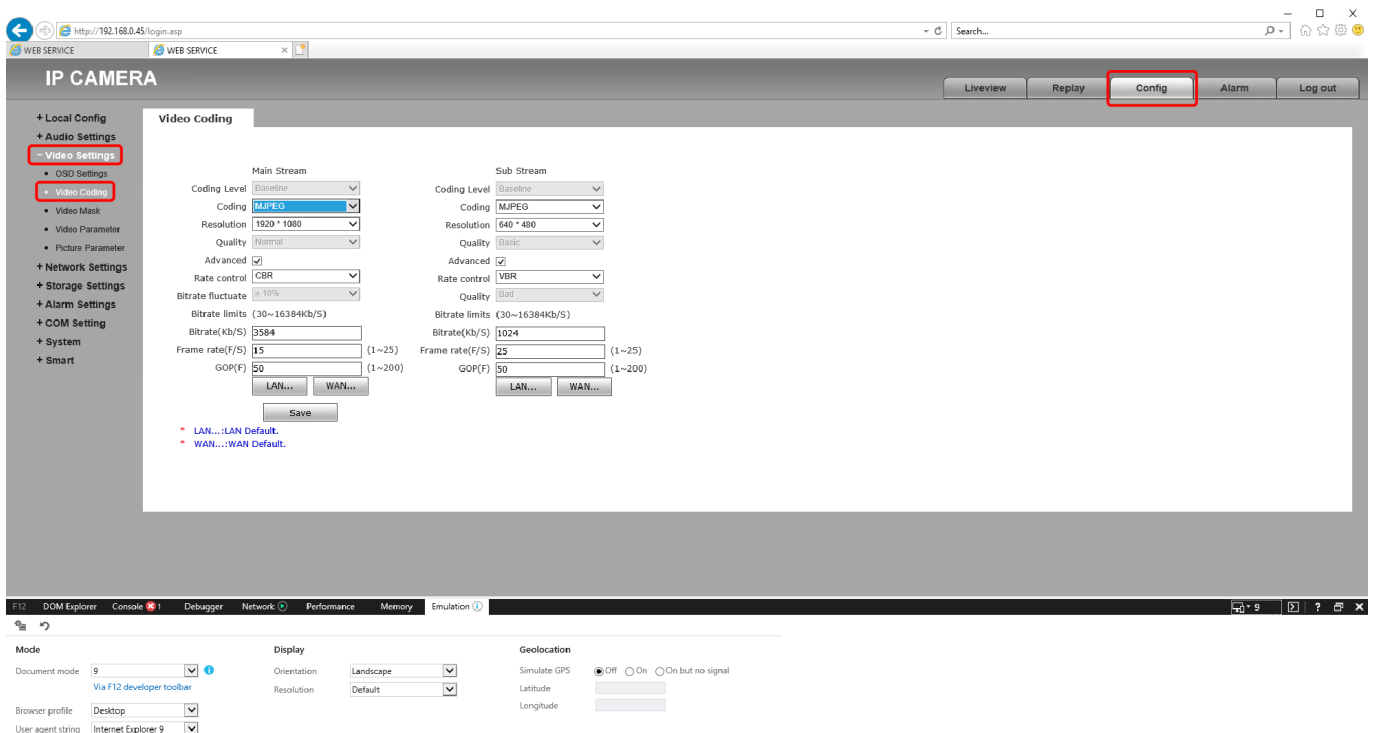
- After the installation has completed, type in the camera username and password, and click 'Login'. By default, both the username and the password are *admin*:



- The following window will appear on the screen. If the image is stretched or compressed, you can alter your view using the W:H button. The settings are located in the Config tab:



- In the Config tab, navigate to Video Settings > Video Coding:



- In the Video Coding window, check that the Coding field is set to MJPEG for best image recognition results when using the myCNC Vision System. Here you can also change the resolution and the frame rate of the camera. Typically, a frame rate of around 10 frames/sec is sufficient for the myCNC Vision System. Click 'Save' once you've successfully altered the necessary settings:

IP CAMERA

LiveviewReplayConfigAlarmLog out

+ Local Config

+ Audio Settings

- Video Settings

+ OSD Coding

+ Video Mask

+ Video Parameter

+ Picture Parameter

+ Network Settings

+ Storage Settings

+ Alarm Settings

+ COM Setting

+ System

+ Smart

Video Coding

Main Stream

Coding LevelBaseline

CodingMPEG

Resolution1920 * 1080

QualityNormal

Advanced

Rate controlCBR

Bitrate fluctuate±10%

Bitrate limits(30~16384Kb/S)

Bitrate(kb/s)3584

Frame rate(F/S)15(1~25)

GOP(F)50(1~200)

LAN...WAN...

Save

Sub Stream

Coding LevelBaseline

CodingMPEG

Resolution640 * 480

QualityBasic

Advanced

Rate controlVBR

QualityBad

Bitrate limits(30~16384Kb/S)

Bitrate(kb/s)1024

Frame rate(F/S)25(1~25)

GOP(F)50(1~200)

LAN...WAN...

LAN...:LAN Default.

WAN...:WAN Default.

F12

DOM Explorer

Console

Debugger

Network

Performance

Memory

Emulation

Mode

Document mode9

Via F12 developer toolbar

Browser profileDesktop

User agent stringInternet Explorer 9

Display

OrientationLandscape

ResolutionDefault

Geolocation

Simulate GPS

Latitude

Longitude

From:
<http://docs.pv-automation.com/> - myCNC Online Documentation

Permanent link:
http://docs.pv-automation.com/troubleshooting/camera_troubleshooting?rev=1579201763

Last update: 2020/01/16 14:09

